

# ARTEMIS

Leros Boatyard

The family yard in the Eastern Med

## MOORING

Conditions & Regulations

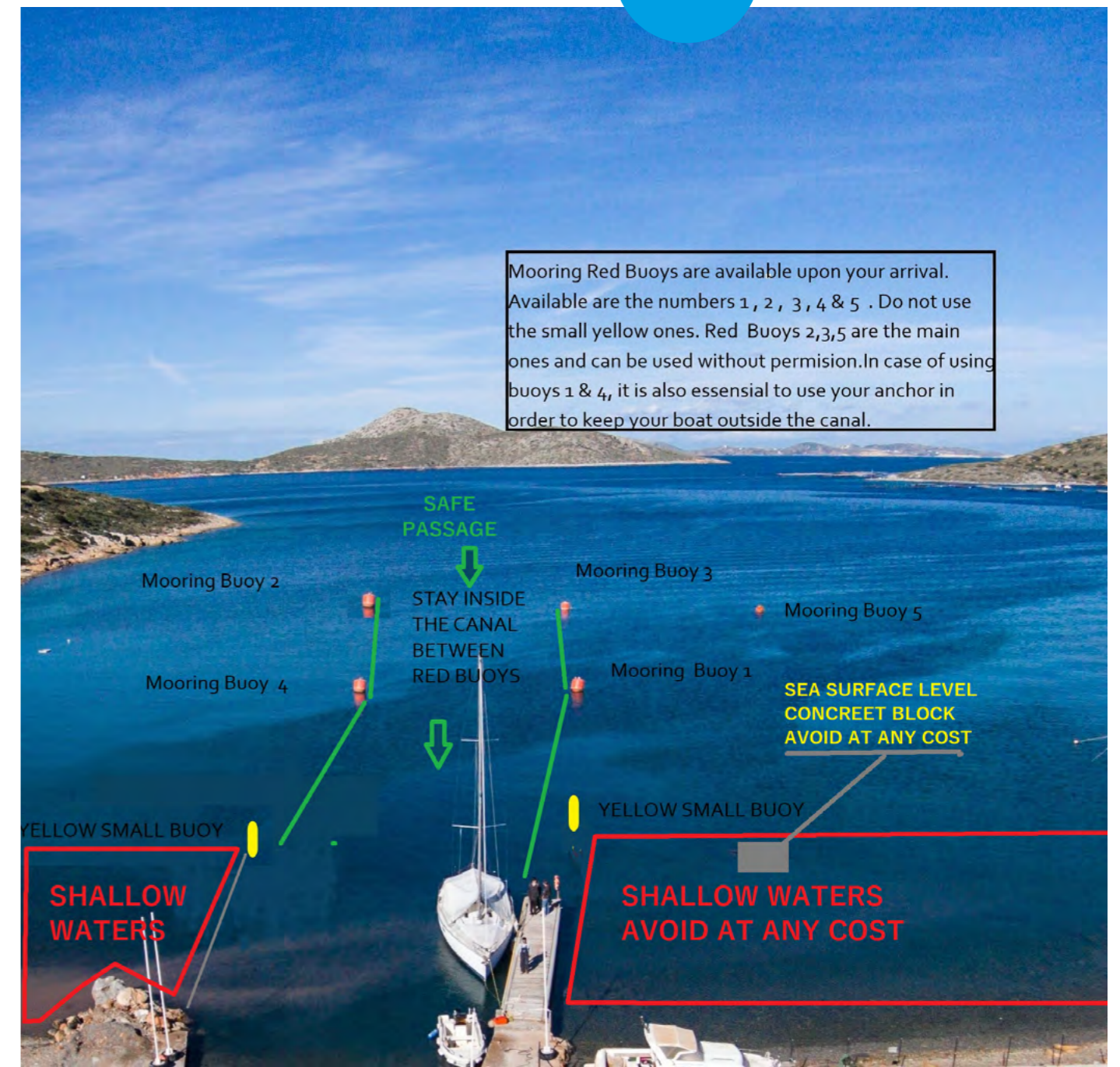
# Dear Clients

## Welcome to Artemis Leros Boatyard!

Our goal is to make your stay pleasant experience.

You are kindly requested to read and follow the information below.

## Artemis Bay Map



1.

Any vessel requesting access to one of the buoys (except buoys 1 and 4) or to the pontoon has to contact the boatyard through channel 69 via VHF.

2.

Buoys 2, 3 and 5 are the main ones and can be used without permission. Buoys 1 and 4 require permission from the boatyard through channel 69 via VHF. In the event of using buoys 1 and 4 it is essential also to use your anchor in order to keep your boat's loose end outside the canal. In any other case, the use of anchor is not allowed unless in an emergency.

3.

All clients MUST take their Fore sail(s) down before the hauling out procedure. Ideally, you must have taken the genoa off before your arrival. If the weather doesn't permit such a task at the day you can always take the genoa off whilst on the hard when there is NO wind at all. Again, if the weather condition doesn't allow you to take your genoa off before you go home whilst the boat is on the hard, then

Artemis staff is fully entitled to take them down and the cost will be automatically charged to the client. This is very important for the safety of your boat and the neighbouring boats over the winter to avoid the risk of the genoa getting unfold and affecting the stability of the boat on the cradles. It is very important to ensure the safety of the vessel and the neighbor vessels whilst on the hard.

4.

As soon as you are ready to approach the pontoon you **need contact us through channel 69 via VHF in order to get instructions.** If you are single handed and need help, please ask for our assistance and our pilot boat will help you with your approach.

5.

Before entering the canal, you are kindly requested to position **all the necessary fenders to the port side** of your vessel and **be prepared to throw us your own lines** while you are approaching the pontoon. **Make sure you leave the pontoon to port** and that you are approaching at a very slow speed. Please, follow the instructions of our personnel who will be accepting you at the pontoon.

6.

All vessels reaching the canal passage between the buoys they must reduce speed not higher than 1 knot.

7.

On arrival at the pontoon, the owner, skipper, or representative of the vessel must check in at the reception with all the necessary documents. They must inform the reception about the length of stay and any other valuable information with regards their vessel.

8.

All clients must specify the lifting points of the vessel and the underwater external protrusions if exist. The Catamaran owners must provide the Boatyard with the docking plans of their vessel

9.

Before sailing away from the pontoon (lifting bay), the owner, skipper or representative of the vessel must notify the reception through channel 69 via VHF. You will then receive further instructions and help from our staff if required. You must keep the vessel in the middle of the canal up to the buoy 3 and 4 level before attempting any further maneuver, even if you are reversing.

10.

Mooring is free of charge and the length of stay is depending on capacity. Please speak to the reception for availability and bookings. Any further utilities will be charged separately such as water and electricity supply.

11.

During mooring in the boatyard all vessels must be insured and fully supplied with all the safety equipment (fire system, torches and dinghies).

12.

There is a fuel supply service and can be completed in the pontoon as well as whilst the vessel is on the hard.

13.

The Boatyard is not responsible for the loss of any personal belongings left on top of your vessel unattended.

14.

You are expected to keep the facilities clean and tidy and to respect the instructions given by the boatyard. The laundry, toilets and douches are available for the customers who are using the mooring buoys.

15.

It is strictly forbidden to throw away any kind of materials that are hazardous and can pollute our environment. There are special bins allocated behind the Reception building for disposing these kinds of materials.

16.

All vehicles can be parked in the outdoors parking space placed behind the Reception building outside the main entrance of the boatyard.

17.

The boatyard holds no responsibility for the safety of the vessel when they are in the pontoon (lifting bay) or held on the moorings. The owner, skipper or representative keeps full responsibility for their vessel. Leaving your vessel unattended is not recommended.



# DOCKING AREA

## Allowed to & Regulations

The regulations which follow are excerpts from the Company's 2nd Edition General Terms and Conditions, which can also be found on our website <http://lerosboatyardltd.com>, or as a hard copy on our premises upon request.

**BASIC TERMS OF DOCKING**

**Allowed to and Regulation.**

1.

Any vessel requesting access to the buoys or the pontoon (lifting bay) has to get approval from the Boatyard's reception through channel 69 via VHF.

2.

The Boatyard is covered by Millstream Underwriting Limited on behalf of certain Underwriters at Lloyd's and Company Markets under the Policy with Reference No: GT7980MAA231. General Liability limit 2.000.000€. Third-party liability limit 2.000.000€. Services insured: Port Services, docking, berthing, safekeeping and/or storage, hauling out, launching moving and repairs.

3.

All clients must specify the lifting points of the vessel and the underwater external protrusions if exist. The Catamaran owners must provide the Boatyard with the docking plans of their vessel.

4.

All payments must be settled at least 10 days before the launching date of the vessel, if you are paying by card or bank transfer. Only cash will be accepted for bill settlement within last 24h before the launching date. For more information of the payment procedures, you can find in the contact's terms and conditions.

5.

On Sundays or any other legal holiday, no operations will be taking place without an appointment. The Boatyard needs at least 48 hours' notice prior to the hauling out and launching procedure. During June & July and August no operations will be taking place over the weekends due to annual maintenance works of the equipment.

GENERAL REMARKS.

**BASIC TERMS OF DOCKING**

**Allowed to and Regulation.**

6.

The Boatyard holds the right to relocate the vessel if this is necessary to facilitate the boatyard's smooth operation or in an emergency situation. The relocation is being charged to the client only if the contract has expired by the time that the vessel needs to be relocated and a new one has to be signed.

7.

The refueling services must only be contacted through the Boatyard's reception. All vessels can be supplied with fuel at the pontoon (lifting bay) and/or on the hard standing.

8.

There are three kinds of pillars depending on the parking position of the vessel, pillars with counters (pre-paid or paying before launching) and pillars without counters (fixed price according the length of stay).

More specifically, if vessel is connected to type 1 (without counters) then the cost will be 40,00 per contract\* plus VAT 17%.

If vessel is connected to type 2 (with counters) then the cost will be according to the measurement\*\* Cost 5,85€ per cubic meter(m3) & 0,90€ per Kwh plus VAT 17%.

If vessel is connected to type 3 (with pillar key) then the cost will be according to the prepaid key\*\* Cost 5,85€ per cubic meter(m3) & 0,90€ per Kwh plus VAT 17%.

If vessel is not connected to the utilities of the yard, then it will be without any cost. \*The owners that perform works by themselves and the vessel is connected to type 1 pillars, before the commencement of the works must inform the Yard administration, in order an extra counter to be provided. Cost will be according to the measurements.

## BASIC TERMS OF DOCKING

### Allowed to and Regulation.

9.

**No client is authorized** to move or adjust their vessel's cradles. The cradles are being inspected on a regular basis and this service can only be carried out by the Boatyard's Staff.

10.

All clients **MUST** take their Fore sail(s) down before the hauling out procedure. Ideally, you must have taken the genoa off before your arrival. If the weather doesn't permit such a task at the day you can always take the genoa off whilst on the hard when there is **NO** wind at all.

Again, if the weather condition doesn't allow you to take your genoa off before you go home whilst the boat is on the hard, then Artemis staff is fully entitled to take them down and the cost will be automatically charged to the client.

This is very important for the safety of your boat and the neighbouring boats over the winter to avoid the risk of the genoa getting unfold and affecting the stability of the boat on the cradles. It is very important to ensure the safety of the vessel and the neighbor vessels whilst on the hard.

11.

It is prohibited to climb on the mast or open sails while the vessel is standing on the hard.

12.

When the vessel is on the hard their backstay and shrouds must be tensioned to provide adequate mast stability. The Boatyard is fully entitled to tension any loose rigging if it is necessary for safety and the cost will be automatically charged to the client.

13.

For the safety and protection of the nearby vessels you **MUST** notify the management prior of completing any hazardous tasks/installations at your vessel.

14.

Everyone must respect the quiet hours in the boatyard. Loud works can only be performed during the working hours between 8:00am until 15:00pm. Noise disturbances in afterhours will be requested to stop immediately.

15.

Keeping the adjacent area of the vessels clean and tidy. Throwing away any hazardous material that may pollute the environment is strictly forbidden. The Boatyard is providing special bins in which you can dispose different types of materials and are located behind the Reception building.

16.

Drugs and excessive alcohol consumption are not permitted inside the boatyard's premises. Only prescribed drugs are allowed.

17.

Continuous electricity supply is provided only when the owner is on board and will be taken away on their departure from the boatyard. There is a batteries charging service available should you wish to periodically charge your batteries (Speak to Reception for more information).

18.

All vehicles must be parked in the area behind of the reception building.

GENERAL REMARKS.

## Owners / Representatives are responsible for :

1.

Checking in at the Boatyard's reception upon arrival and departure date.

2.

Ensuring that the vessel is safe and functional before launching and that all the necessary safety equipment is present up to date. In busy periods as soon as the vessel is launched, you should depart from the lifting bay/mooring within 30 minutes and use one of our available buoys unless you have been instructed otherwise from the Boatyard's staff.

3.

The Boatyard is covered by Millstream Underwriting Limited on behalf of certain Underwriters at Lloyd's and Company Markets under the Policy with Reference No: GT7980MAA231. General Liability limit 2.000.000€. Third-party liability limit 2.000.000€.

Services insured: Port Services, docking, berthing, safekeeping and/or storage, hauling out, launching moving and repairs. It is also obligatory that the boat/yacht will have in place a third party liability coverage with a limit up to her value or (in case the value is less than 3.000.000 EUR) up to 3.000.000 EUR. NB : Please bear in mind that when the boat/yacht is onshore she has to be insured for third party liability in accordance with the limits imposed by the Greek law 4926/2022 or any amendment of it.

4.

Ensuring that the vessel is safe and functional before launching and that all the necessary safety equipment is present up to date. In busy periods as soon as the vessel is launched, you should depart from the lifting bay/mooring within 30 minutes and use one of our available buoys unless you have been instructed otherwise from the Boatyard's staff.



Owners / Representatives  
are responsible for :

5.

Keeping the washing machines clean. All clients are requested to operate the washing machines according to the given instructions

6.

Keeping the Barbeque Area and Bathroom facilities clean and tidy immediately after use.

7.

Keeping the speed limit up to 5 km, when driving inside the Boatyard. **The parking area is located** behind the reception office, outside the main gate, and you are allowed to drive in the boatyard only when loading or unloading any personal belongings. The boatyard holds no responsibility for any damages of the vehicles.

8.

Notifying the boatyard's reception via e-mail when someone is visiting your vessel. No visitor can have access on a vessel unless a written permission has been provided by the owner of the vessel they are visiting. The boatyard keeps the right to access any vessel at any time if deems necessary.

9.

Ensuring the safety of their visitor(s)/ crew. External contractors or technician hired by the owner of the vessel is not allowed.

10.

The protection of the neighbor vessels if any exterior works/ repairs are carried out, always after notifying the boatyard first about the nature of the planned works.

A decorative graphic on the left side of the page consists of two overlapping white squares. The top square is partially cut off by the left edge of the frame. The bottom square is also partially cut off. The overlapping area in the center creates a white cross-like shape.

# Always at your disposal The Marina Reception

All of the above are based on the regulations and instructions of the Greek Port Authorities and the insurance company policies.